

# Uplifting Spaces



A Design Challenge from AMQ

**AMQ challenged top dealerships to dream big and rethink the modern office. The challenge? Design a 5,000 square-foot space that blends functionality, visual appeal, and user experience.**

**This lookbook takes you inside their creative journeys – from early insights to fully realized spaces.**

The results show how intentional design can transform the workplace into a space where people feel inspired, supported, and ready to thrive.





# An Atmosphere to Inspire

1<sup>st</sup>

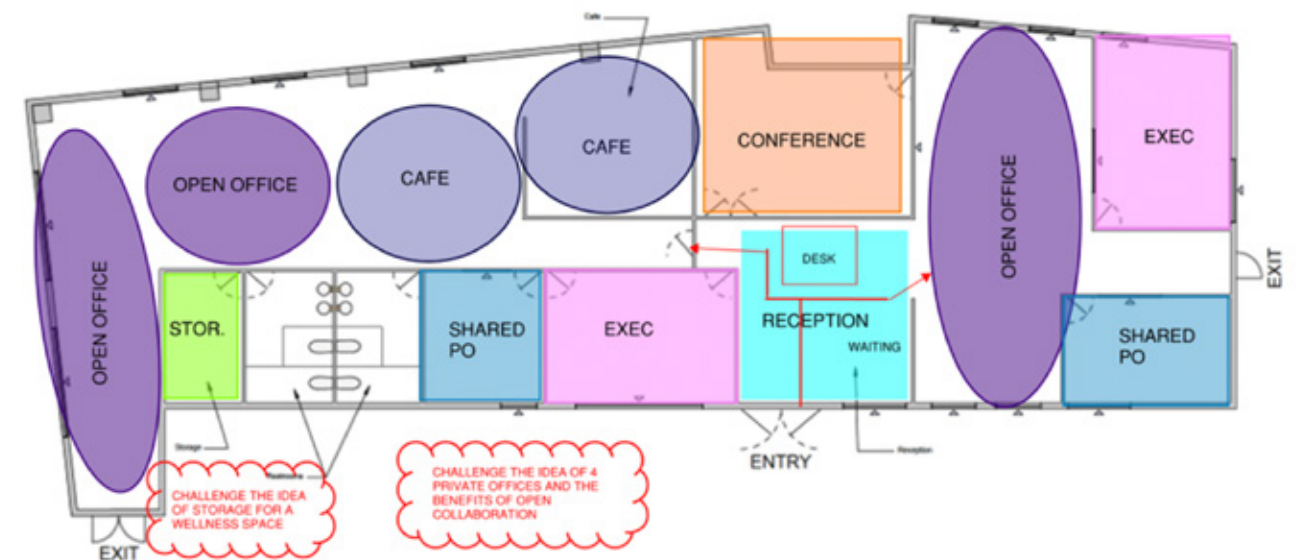
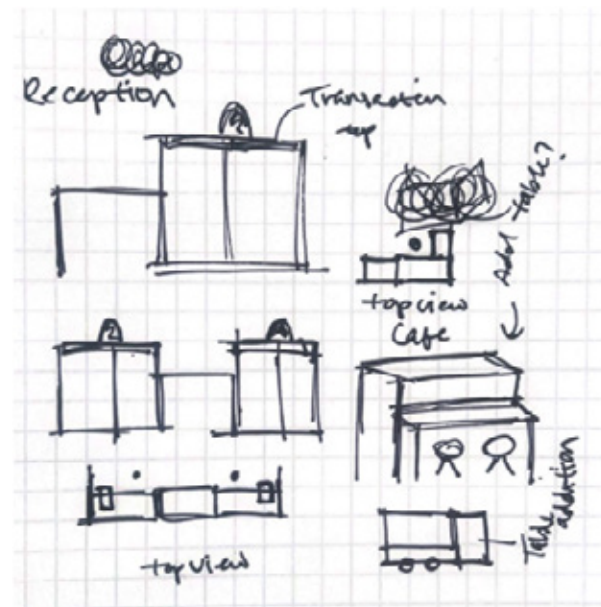
Place Designer

**JaCori Sextro**

Scott Rice Office Works

JaCori's design reimagines the workplace as a vibrant blend of inspiration, collaboration, and comfort.

Every design choice—from furniture to architecture—is thoughtfully integrated to serve a purpose while contributing to a unified, elevated aesthetic.







# An Atmosphere to Inspire

JaCori's design envisions the workplace as a dynamic intersection of inspiration, collaboration, and comfort. Through intentional design choices, furniture and architecture are harmonized—each element not only fulfilling a functional role but also contributing to a cohesive and elevated aesthetic experience.





## Reception

In designing the reception area, JaCori emphasized accessibility and inclusivity, creating a sleek, ADA-compliant desk that integrates seamlessly with elegant panels. The layout optimizes traffic flow and maintains security, offering a warm and welcoming experience that reflects her vision of a supportive space.





### Open Workstations

JaCori’s open workstation design presents a cohesive aesthetic that supports both function and well-being.

Modular setups allow the space to adapt to various tasks, while vibrant colors and natural materials add energy and warmth. Each workstation is positioned to maximize natural light and airflow, making these areas dynamic hubs for both individual and team work.





## Private Office

Blending privacy with community, JaCori's private offices balance confidentiality with accessibility. These spaces incorporate natural materials and flexible furniture, allowing for moments of focused work while encouraging occasional interaction.

## Semi-Private Office

Moving away from traditional private offices, JaCori transitioned most leadership positions to semi-private spaces. By placing leaders among employees, she fosters collaboration and open communication, creating a more cohesive and engaged team environment.

Uplifting Spaces







## Communal / Open Space & Café



In the café and communal areas, JaCori has harmonized architecture with distinctive furniture arrangements, creating spaces that encourage both collaboration and individual focus. These areas showcase beautiful furniture within an uplifting atmosphere central to her vision.





## Wellness Space

Repurposing a former storage area, JaCori designed a wellness room that serves as both a mothers' room and a quiet space for decompression and private conversations. Natural materials and calming colors foster a restorative environment aligned with her "Uplifting Spaces" concept.





## Multi-Purpose Spaces: Training / Conference



The adaptable conference and training rooms are designed to foster collaboration and creativity. Modular furniture allows these spaces to accommodate varying group sizes and activities, while natural materials and vibrant colors enhance focus and well-being.



# A Hybrid Office that Works for Everyone

2<sup>nd</sup>

Place Designer

**Lauren Krause**

Corporate Interiors

Lauren Krause's design supports the hybrid workforce with adaptable, multifunctional spaces that balance comfort and flexibility. Her cozy, café-inspired environment encourages collaboration while offering private areas for focus. The design empowers employees with choices that suit diverse tasks and work styles.







# Reception

As the first point of contact, the reception area in Lauren’s design makes a strong, welcoming impression for employees and clients alike, setting the tone for a warm and professional environment.





## Communal Space & Café

Lauren’s communal areas and café are designed as multifunctional spaces, providing employees with an experience that can’t be replicated by working from home. With a variety of seating options, these areas can be used for socializing, brief meetings, or as alternative workspaces.





## Private Office | Shared Office

Lauren recognizes the need for efficient use of limited space in hybrid work environments.



Private offices in her design are dual-purpose, maximizing functionality by serving as both personal offices and meeting rooms when not occupied. Shared offices, in turn, accommodate multiple users throughout the day, supporting a dynamic and flexible environment.





## Semi-Private Workstations

Reflecting the increased desire for privacy in open office layouts, Lauren's workstations offer semi-private configurations that create a balance between collaborative and individual work. Employees can work closely with others while still enjoying visual and acoustical privacy.





## Open Spaces

The open spaces in Lauren’s design incorporate adaptable furniture that can be rearranged to suit different tasks and preferences, ensuring functionality for everyone.





# Multifunctional Conference Rooms

In a hybrid setup, conference rooms are not always fully occupied. Lauren’s multi-functional conference rooms are designed to double as alternate meeting or work areas, making efficient use of space and ensuring each room is utilized to its full potential.

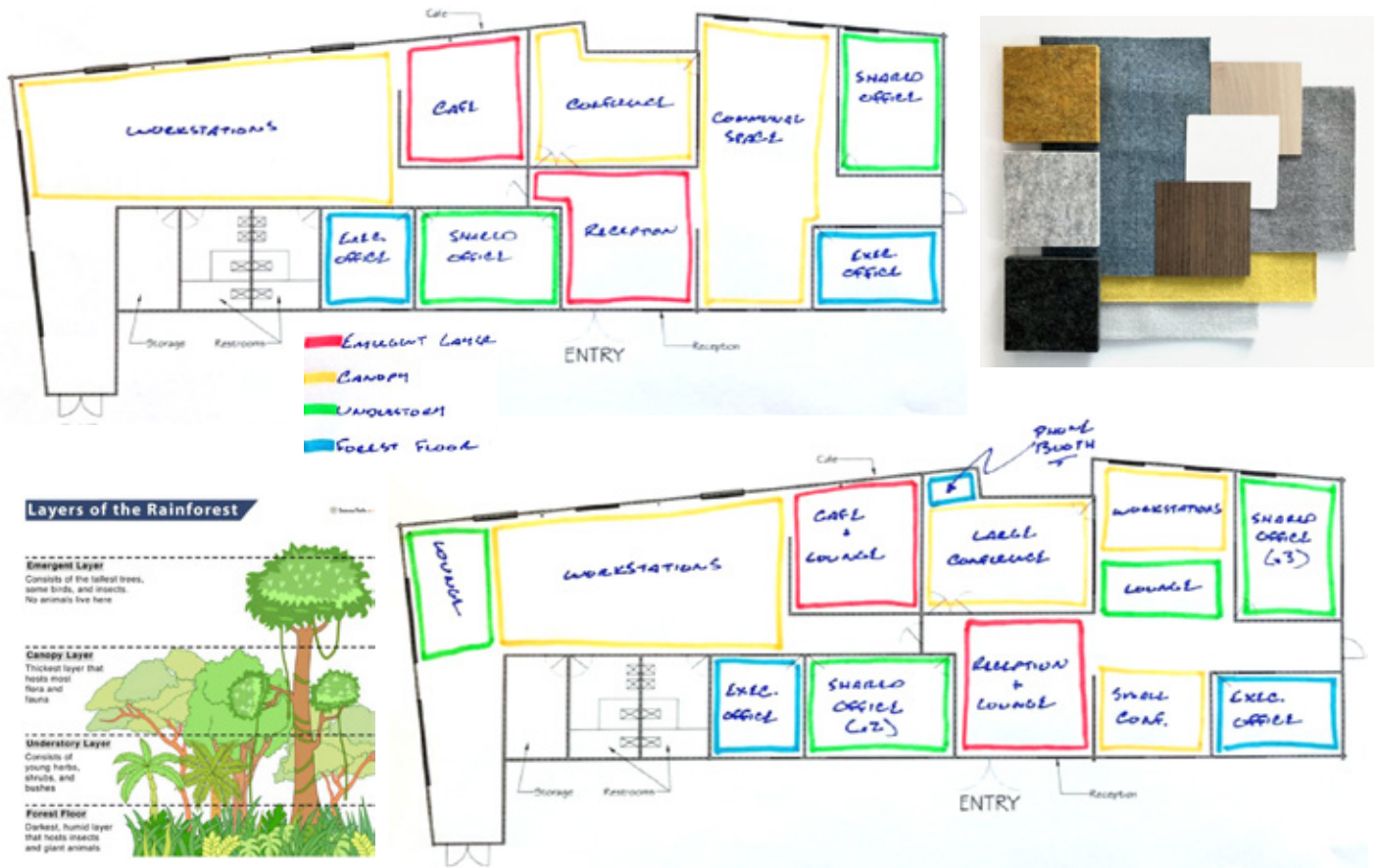


# Rainforest Layers of Privacy

3<sup>rd</sup>

Place Designer  
**Kristin Renda**  
Corporate Interiors

Kristin’s design meets the growing need for privacy in collaborative workspaces. Inspired by the layers of a rainforest, her concept organizes spaces by privacy level—from open “Canopy” zones for connection and creativity to secluded “Forest Floor” areas for quiet focus and private calls.







Reception

Inspired by the Hawaii Federal Credit Union, Kristin’s reception area uses comfortable, welcoming furniture to greet employees and clients warmly.





## Private Offices



Kristin's private offices consider the visual backdrop for virtual meetings, ensuring a professional and consistent look.





## Shared Office

The existing architecture of this office includes two doors for entry. A Tektis panel divides the office into two equal halves with identical desks on either side to give the impression of a private office.

The wall-mounted Tektis panel provides power access to both desks; a boundary screen along the back creates a hallway parallel to the windows. To address sound concerns in shared offices, Kristin incorporates acoustic solutions to create a quieter environment.





**Semi-Private Workstations**

By limiting personal storage at desks, Kristin encourages digital documentation, reducing paper waste.





# Communal Space

Kristin’s design includes varied seating in communal areas, allowing employees to change their posture throughout the day and select where and how they work.





## Café & Open Spaces

Kristin envisions the café as a multi-functional area that can be used throughout the day. She encourages spontaneous interactions through inviting seating in open spaces.





## Multifunctional Conference

Conferences are no longer confined to traditional meeting rooms.

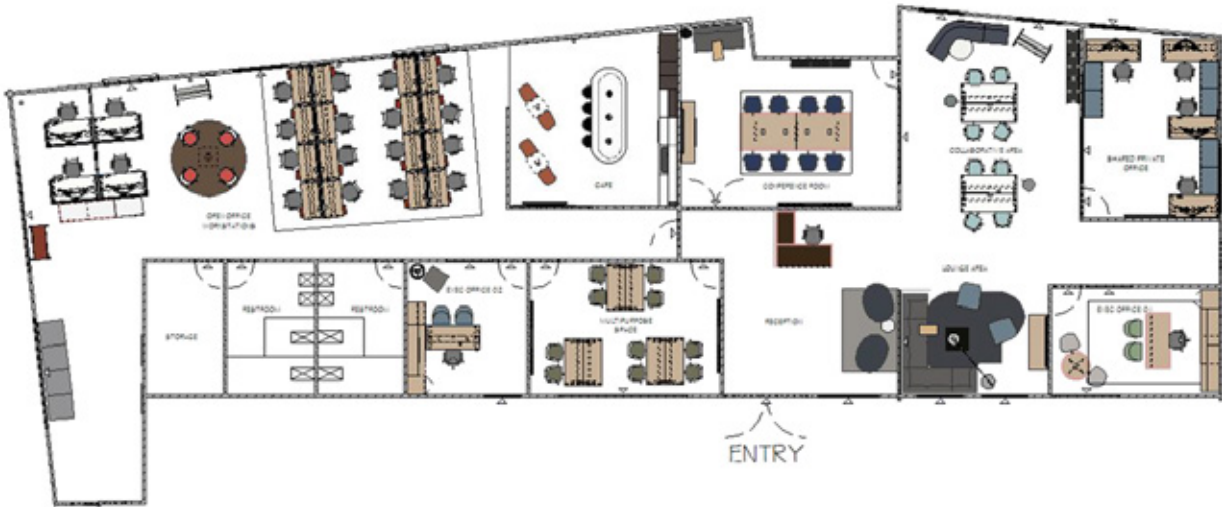
In Kristin's design a secondary conference area within the open office space can accommodate simultaneous meetings. A mobile monitor and reconfigurable furniture, create flexible conference areas that adapt to different meeting formats.



# Elevating Joy, Collaboration, & Innovation

3<sup>rd</sup> Place Designer  
**Jessica Napoles**  
Empire Office

Jessica’s design blends inclusive, evidence-based principles with a modern aesthetic to elevate joy, collaboration, and innovation. Energizing colors, thoughtful materials, and integrated technology create a stimulating environment. Flexible layouts foster teamwork, while private and restorative spaces support well-being and productivity.







## Reception

As the initial touchpoint, the reception area sets the tone for the overall workplace experience. Jessica's design is both invigorating and welcoming, the reception includes a functional workstation and comfortable guest seating, making a strong first impression for employees and visitors alike.





## Communal Space

Based on research, Jessica designed the communal spaces to foster collaboration, featuring flexible furniture that can be reconfigured as needed. The choice of materials brings energy and creativity into the space, making it a vibrant hub for team interactions and idea-sharing.





## Private Office



Guided by research, Jessica designed the private offices to enhance productivity while allowing individuals to personalize their comfort levels. Functional furniture and well-chosen accessories create a sense of territoriality, supporting both focused work and small, private meetings.





## Shared Office

Jessica’s design creates a shared office space that supports both focused work and team collaboration. By thoughtfully balancing individual needs with opportunities for communication, her layout enables department heads and team members to work productively—together and independently.





## Café

The café serves as a versatile area for socializing and recharging. Jessica selected furniture to accommodate various uses, supporting both casual gatherings and focused work, making the café a multifunctional social hub.





## Open Spaces



Open areas and workstations are designed to spark engagement and support diverse collaboration styles, fostering creativity and connection in a shared space.





## Multifunctional Conference Rooms

Jessica designed the conference rooms to be highly adaptable, with the flexibility to serve various functions within the same space. This approach maximizes the utility of each conference room, ensuring it can meet a range of needs while supporting dynamic, hybrid work environments.





---

# Creating Your Uplifting Design

We hope these “Uplifting Designs” have sparked inspiration and excitement for transforming workspaces with AMQ and our dealer partners.

We think outfitting a new office should be simple, stress-free and maybe even fun. These award-winning designs demonstrate how the creativity and expertise of our dealer partners make that possible.

With products that are on-trend, affordably priced, and backed by the best warranty in the business our dealers can help you turn inspiring visions into reality.







A M Q